

PER MORGARD

NOVA GENITURA

[illegible]

PER NØRGÅRD
NOVA GENITURA
(MARIATHYMNEN)
- 1975 -

WM 43013

PARTITURET ER NOTERET I SAMME
OKTAV SOM DE KLINGENDE TONER.

EN BUE FORBINDE KANTEDE ELLER
RUNDE NODER ANGIVER EN 'GYLDEN
DELING' f. eks.

= ca: 3 5 8 5

(i 2 tilfælde noterede både konventionelt og proportion)

↓ angiver sænkning som ^{overtone -} septim (7. harm.)

↑ - hævnig - ^{undertone} septim (- -)

el. undecim (11 harm.)

altså meget lille afvigelse
(ca. $\frac{1}{6}$ tone).



Til "SUBROSA"

'NOVA GENITURA'
(MARIA-HYMNER)

— 1975 —

Per Nørgård

Før
+ Sangstemmer
poco ad lib.

Sopran (m. 2 ^{halst} ^{15 2} ^{ce. taler oktaver})
violin
Bløkkfløjte(r) (alt, tenor, bas, og storbas)
gambe(r) (diskant + bas)
Lut el. Theorboe (el. guitar)
Cembalo

1 A

NORMAL NOTATION (A)

Handwritten musical score for the first system, labeled "1 A" and "NORMAL NOTATION (A)". The score includes staves for Crot., S., VI., Fl. (dolce), Gambe (Disc.), Theorbo, and Cembalo. The tempo is marked "K (♩ = 1.45)". The lyrics "A - VE - MA R..." are written below the vocal staves. The notation includes various musical symbols such as notes, rests, and dynamic markings like "pp".

Handwritten musical score for the second system, continuing the piece. The tempo is marked "K (♩ = 1.45)". The lyrics "RI - STE - LA -" are written below the vocal staves. The notation includes various musical symbols such as notes, rests, and dynamic markings like "pp".

WH Nr. 5. F. 16

Copyright © 1975 by Wilhelm Hansen, Copenhagen



$$(\leftarrow \square = \circ \rightarrow)$$

Handwritten musical score for a string quartet and voice. The score is written on a system of staves. The instruments are labeled on the left: CL (Clarinet), S (Soprano), VI (Violin), II. dolce (Violoncello), ramba (Viola), Theorboe Luto (Theorboe), and Cim-balo (Cymbalo). The score includes various musical notations such as notes, rests, dynamics (pp, p), and articulation marks. The lyrics "A UE MA - Ri - S STE - LLA" are written below the vocal line. The score is marked with a 15 and a square symbol, indicating a measure of 15 seconds.



2 (ADAGIO $\text{♩} = \text{c. 60}$)

CROT. + S: 1. volta tacet

C'

CRIT. *mf semplice*

Sopr. A-VE MARIS STE-LLA DEI MATER A-LMA

Vln. *pp*

Fl. *pp*

2. volta *piu f*

Ob. (Dis) *pp*

Clarinet *1. volta tacet*

Cemb.

pp

pp legatissimo

A-T QUE SE-MPE-R VI-R-GO

sul G



ADAGIETTO (♩ = c. 72)

Handwritten musical score for the first system of "Adagietto". It features a vocal line with lyrics "A - E - U - A - E - A - (A -)" and piano accompaniment. Performance markings include "pp", "pp legato possibile", "Pord.", "sul D", and "sul A". The key signature has one sharp (F#).

Handwritten musical score for the second system of "Adagietto". It features a vocal line with lyrics "E - I ! FE - I ! FE - LIX FE - LIX FELIX COELI DO - RTA" and piano accompaniment. Performance markings include "Allargando", "gliss", "muta in Alto", and "cresc.". The key signature changes to two sharps (F# and C#).

WH Nr. 5. F. 10



Allargando

4 **B**

S AVE MA - RI - S DE I MA - TE - R A - L MA

VI.

Fl. (A)

Gb. MA - RI - S STE - LLA DE I MATER A - L

(sunget og spillet)

L.

Cb. b.

E - i ! FE - LIX COE - LI PO - RTA A (7th)

MATER A - L MA ATQUE SE - MPER VIR - GO FE - LI - (x)

A

ADAGIETTO (♩ = c. 72)

3

ppp
pp legato possibile
A - E - U - A - E - A - (A -)
U - E - A - E - A - E
Pord. sul D
sul A

Allargando
E - I - FE - I - FE - LI X FE - LI X FELIX COE LI DO - R -
muta in Alto
cresc.

WH Nr. 5. F. 16



Allargando

5

(A) f p

Rall...

5
4

$\frac{10}{8} \rightarrow \frac{5}{4}$ \leftarrow C

$\frac{10}{8} \rightarrow \frac{5}{4}$ \rightarrow *a tempo, grazioso*

S. *ma - ri - na - ri -*

V. *ma - ri -*

Fl. dlc. Alto *p*

g. *p*

L. *p*

Cb. *p*

WH Nr. 5. F. 18



Handwritten musical score for a vocal and instrumental ensemble. The score is written on ten staves, with the first three staves labeled Vn. (Violin), Fl. (Flute), and gb. (Guitar/Bass). The music is in 2/2 time, indicated by the '2' over the first staff. The key signature is one sharp (F#), indicated by the sharp sign on the F line of the first staff. The lyrics are written below the vocal staves: "STELLA PLE-NA GRA-CI-E MA-TER SI-PU-L-ET PU-EL-LA". The score includes various musical notations such as notes, rests, accidentals, and dynamic markings like *acc.* (accelerando). The piece concludes with a double bar line and a final chord.

Vn. FL. gb.

STELLA PLE-NA GRA-CI-E MA-TER SI-PU-L-ET PU-EL-LA

acc.

Senza misura (quasi cadenza)

7

Fl. *8va* *ad lib.* *loco* *do*

tornando *rall. molto* *quasi a tempo*

S (accel.)

CR. *p* *arco*

S. *p* *arco*

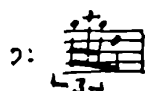
VI. *p* *arco*

Fl. *p* *arco*

gb. *p* *arco*

lt. *p* *arco*

Cbl. *p* *arco*



Handwritten musical score for the first system, measures 15-18. The staves are labeled CR, S., Fl., Lt., and Cbl. The music is in G major (one sharp) and 4/4 time. The Flute part features a complex melodic line with many accidentals and slurs. The Cello part has a rhythmic accompaniment with many accidentals.

Handwritten musical score for the second system, measures 19-22. The staves are labeled CR, S., Vi., Fl., Gb., Lt., and Cbl. The Soprano (S.) part includes the lyrics: AVE MARIA S DEI MATER ALMA. FE- A - 3 VE MA 3 RIA. The Flute (Fl.) part includes the lyrics: A - 3 VE MA 3 RIA. The Gb. part includes the lyrics: A - 3 VE MA 3 RIA. The Cello (Cbl.) part has a rhythmic accompaniment. The music is in G major (one sharp) and 4/4 time.

Handwritten musical score for a vocal and piano arrangement of "Ave Maria". The score is written on ten staves, with the vocal line in the upper staves and the piano accompaniment in the lower staves. The key signature is one flat (B-flat major or D minor), and the time signature is common time (C).

The lyrics are written below the vocal line:

LI - COE - LI PO RTA A VE
 GRATIA PLE - N
 A VE 'MA RI A
 A VE MA RI A
 MA RI - A
 GRA CIA PLEN - (8) MA - RI - S STE - LLA DE I
 A VE MA - RI - S DE I - MA

Performance instructions and markings include:

- f* (forte) at the beginning.
- p* (piano) at the end of the first system.
- GRATIA PLE - N* (Gratia Plena).
- (A)* (Alto).
- muta in basso* (change to bass).
- pp* (pianissimo) in the second system.
- fi. gran basso* (first grand bass).
- (gba: loco)* (grand bass ad libitum).
- S. + guiriba/ut* (Soprano + guiriba/ut).
- pp* (pianissimo) in the third system.
- (8)* (octave).
- MA - RI - S STE - LLA DE I* (Mary Star of the Sea).
- A VE MA - RI - S DE I - MA* (Ave Maria).

The piano accompaniment features a complex, flowing melody in the right hand and a more rhythmic, harmonic accompaniment in the left hand. The score is written in a clear, legible hand, with some corrections and markings throughout.

Handwritten musical score for a vocal and instrumental ensemble. The score is written in G major (one sharp) and 4/4 time. The instruments listed are Violin I (VI.), Flute (Fl.), Grand Bass (Gr. bs.), Tenor (T.), Alto (Al.), and Piano (P.).

Lyrics:

VI. A-LMA E-I! FE-LIX, FE-LIX COE-LI POR-TA, O

Fl. sunget } A-VE

Gr. bs. mula in alto

T. MATER A-LMA

Al. TER

P. A-U-E MA RI-A GRACIA PLEN-

Performance markings:

- f* (forte)
- fe* (f marcato)
- fe spr.* (f marcato, sprando)
- MA guilty* (written above the Alto staff)
- 8va* (octave up)
- 7* (octave down)
- (x)* (marking a breath or articulation point)

The score features complex melodic lines with many slurs and ties, indicating a highly expressive and technically demanding piece. The piano accompaniment is dense, with many chords and moving lines in both hands.

(PROP. NOT. - B.)

11

Handwritten musical score for the first system, labeled (PROP. NOT. - B.). It consists of five staves. The first staff has a treble clef and a key signature of one sharp (F#). The second staff has a treble clef and a key signature of one sharp. The third staff has a treble clef and a key signature of one sharp. The fourth staff has a treble clef and a key signature of one sharp. The fifth staff has a bass clef and a key signature of one sharp. The notation includes various notes, rests, and accidentals, with some notes marked with 'x' and others with '#'. There are also some handwritten annotations like 'A' and 'B' above the staves.

OSSIA:

Handwritten musical score for the second system, labeled (NORM. NOT. - A.). It consists of five staves. The first staff has a treble clef and a key signature of one sharp (F#). The second staff has a treble clef and a key signature of one sharp. The third staff has a treble clef and a key signature of one sharp. The fourth staff has a treble clef and a key signature of one sharp. The fifth staff has a bass clef and a key signature of one sharp. The notation includes various notes, rests, and accidentals, with some notes marked with 'x' and others with '#'. There are also some handwritten annotations like 'gliss.' and 'muta in gr. basso'.



12 *Semplice ed espressivo, sempre rubato con gusto*
espr. (meno mosso un poco)

F

mf (*>*) (*>*) *20.18*

Lauto

Cembalo

VI.

pp

sotto voce, non legato

p

(1) *esce-rit.*

Can- to

FLOS UT ROSA FLO- RU-IT QUANDO VIR- GO GENU-

Lauto

Sostenuto

p

p

IT MARI-A SALVA TO- REM OM-NI-U-

Cembalo

13
rall. molto

a tempo

S. *p* *mp* *pp*
 NO - VA GE - NI - TU - RA

Fl. *p*
 NO - VA GE - NI - TU - RA

bs.
 NO - VA GE - NI - TU - RA

VI.
 NO - VA GE - NI - TU - RA

(C.)
 (u) *m* *summi* PA - TRIS FI - LIUM NO - VA GE - NI - TU - RA

(Cblo.)
 NO - VA GE - NI - TU - RA

G

Fl. *p*
 Qui DI - VI - NA GRA - TIA DESCEN - DIT A - D INFE -

VI.
 Qui DI - VI - NA GRA - TIA DESCEN - DIT A - D INFE -

pp *buen chiusa ad lib. (quasi improv.)*
 Qui DI - VI - NA GRA - TIA DESCEN - DIT A - D INFE -

WH Nr. 5. F. 10



RA HUMA-NA E T SA-LVA- VIT OM-NI-A

VI.

Fl.

(pp)

RA HUMA-NA- E T SA-LVA- VIT OMNI-A

cresc. f p

Fl.

cresc. muta in tenore.

SUMMA CUM POTEN-TIA, NO-VA GE-NI-TU-RA

mp f

Fl.

cresc. f mp p

SUMMA CUM POTE-N TIA, O A-E-I CAN-

f mp

Fl.

f p

Piu mosso ($\text{♩} = c.60$
 $\text{♩} = c.50$)

pp H
CROT.

S

V.

Fl. ten. *p dolce cant.*

gb.

sonore

TEJ MUS HYMNUS GLO-RIAE CANTI-CO LAE-TI-TI-

CROT. Sopr.

cresc. f

SOLLEMNIZA-NTES HO-DI-E

cresc.

f

cresc.

f

AE LAUDAN-DO SO-LLEMNIZA-NTES HO-DI-E

WH Nr. 5. F. 10

subito
a tempo ($\text{♩} = c. 18$)

16

String. *Piu mosso*

f
P JU- STI TIAE GRA- TI- A- SAGEN—

pp
RE - GI RE - GUM

p grazioso

cresc.

f

pp *fz cresc.*

cresc.

pp *fz* *cresc.*

REGI RE-GUM JUSTI — TIAE GRA — TI A — SA — GENDU

crot. b

salt.

fz

muta in alt?

(8va)

l.v.

trium

b

trium

Handwritten musical score for a piece, page 17. The score is written on ten staves, with the first five staves forming a system and the next five forming another. The notation includes various musical symbols such as notes, rests, accidentals, and dynamic markings. Key annotations include:

- Staff 1:** Melodic line with notes and accidentals.
- Staff 2:** Melodic line with notes and accidentals.
- Staff 3:** Melodic line with notes and accidentals.
- Staff 4:** Melodic line with notes and accidentals.
- Staff 5:** Melodic line with notes and accidentals.
- Staff 6:** Melodic line with notes and accidentals.
- Staff 7:** Melodic line with notes and accidentals.
- Staff 8:** Melodic line with notes and accidentals.
- Staff 9:** Melodic line with notes and accidentals.
- Staff 10:** Melodic line with notes and accidentals.

Annotations and markings include:

- Staff 3:** *pont.*, *fz*, *ord.*
- Staff 4:** *ad lib. songst.*
- Staff 6:** *Sonore*, *fz pont.*, *ord.*
- Staff 8:** *comodo ad lib. improv.*, *(arpeg.)*
- Staff 10:** *(o)*, *(#)*, *(b)*

WH Nr. 5. F. 10

Handwritten musical score for a piano and voice piece. The score consists of five systems. The first system shows a piano introduction with a long melodic line in the right hand and a bass line in the left hand. The second system introduces a vocal line with lyrics "ad lib. sung et." and "spillet". The third system continues the vocal line with "improv." markings. The fourth system shows the piano accompaniment with "improv." markings. The fifth system shows the piano accompaniment with "improv." markings. The score is written in a key with one flat (B-flat) and a 3/4 time signature.

K

Demplise (d = ex, r = va)
J = 78

Handwritten musical score for a piano and voice piece. The score consists of three systems. The first system shows a piano introduction with a long melodic line in the right hand and a bass line in the left hand. The second system introduces a vocal line with lyrics "ad lib. sung et." and "spillet". The third system continues the vocal line with "improv." markings. The fourth system shows the piano accompaniment with "improv." markings. The fifth system shows the piano accompaniment with "improv." markings. The score is written in a key with one flat (B-flat) and a 3/4 time signature.

Handwritten musical score for a vocal and piano piece. The score is written in G major (one sharp) and 4/4 time. It features a vocal line with lyrics and a piano accompaniment.

Vocal Line:

- Lyrics: QUI NA-TUS EST DE VI-R GI-NE MISTICO
- Lyrics: NA-TUS EST DE VI-R GI-NE
- Lyrics: QUI QUI NA-TUS EST DE VI-R GI-NE
- Lyrics: SPI-RA-MI-NE NO-VAGE-NI-TU-RA. ERGO NO-
- Lyrics: SPI-RA-MI-NE
- Lyrics: SPI-RA-MI-NE

Piano Line:

- Accompaniment for the vocal line, featuring chords and melodic lines.
- Accompaniment for the lower section, featuring a more active melodic line.

Performance Instructions:

- mf* (mezzo-forte)
- 5 dolce* (5th finger, dolce)
- ad lib.* (ad libitum)
- Qui Qui* (vocal line)
- 5* (piano line)
- pr* (piano)
- cresc.* (crescendo)
- f* (forte)
- gva-* (guitar)
- Surge* (surge)
- WH Nr. 5. F. 18* (copyright notice)

Handwritten musical score for strings and voice. The score is written on ten staves. The first two staves contain vocal lines with lyrics. The remaining staves contain string accompaniment. The music is in G major and 4/4 time. Dynamics include pp, cresc., f, mf, and dim. There are also performance instructions like "senza misura, quasi eco" and "tutti (non disincrono)".

Vocal Lines:

- Staff 1: (o-) STRA CON - ci - o PSALLAT CUM TRIPU - dio BE
- Staff 2: PSALLAT CUM TRIPU - diu BE -
- Staff 3: NE - di - CAT DO -
- Staff 4: Mi NO
- Staff 5: NE - di - CAT DO - mi NO BE - NE - di - CAT DO - mi - NO, DO - mi -

String Lines:

- Staff 3: Accompaniment for the first vocal line.
- Staff 4: Accompaniment for the second vocal line.
- Staff 5: Accompaniment for the third vocal line.
- Staff 6: Accompaniment for the fourth vocal line.
- Staff 7: Accompaniment for the fifth vocal line.
- Staff 8: Accompaniment for the sixth vocal line.
- Staff 9: Accompaniment for the seventh vocal line.
- Staff 10: Empty staff.

CALMO E SERENO (♩ = c. 30) in tempo

21

pp

A - VE MA - RIA A GRA

muta in bas

A - VE MA -

CR. #d

ME NA

Ris STEL LA

Handwritten musical score for voice and piano. The score is written on ten staves, with lyrics in Latin and German. The key signature is one sharp (F#) and the time signature is 4/4.

Staff 1: A - VE MA - RI DE - MA - TER

Staff 2: *de som sth 21!*

Staff 3: A - VE MA - RI

Staff 4: *Sungati* *g* - fis - e - a) *LA* - MA - RIS - STEL -

Staff 5: A - L MA - E -

Staff 6: *gliss.* *f* *GR.....A*

Staff 7: MA - TER AL - M - SALVA - TO - REM OM - NI - UM

Staff 8: *5* *P*

gb. bs.

Fl. *muta in alt*

g.b. *cresc.*

Summi PA - TRIS Fi - LIUM NO - VA GE - NITU - RA

M *mp* QUI DI - VINA GRA - TIA DE SCEN DI - T A - O IN - FE -

gra. *8va*

Canto ad lib. *8va* A - VE MA - GRA -

mp *canto ad lib*

WH Nr. 6. F. 18

8:9

(♩=60)

RA HUMA-NA E SA-LVA-VIT OM-NI-A

summa cum pote-ntia

Xe

6/2

6/2

N

$\text{♩} = 60$

9 : 8

25

Handwritten musical score for multiple instruments. The score includes staves for:

- Cembalo (Cemb.)
- Lt. (Lute)
- CR. (Cello)
- S. (Soprano)
- Fl. (bas.) (Flute)
- Cemb. (Cembalo)
- VI. (Violin)
- gb. (Guitar)
- Lt. (Lute)

The score features complex rhythmic notation, including time signatures like 9:8 and 8:9, and various musical symbols such as notes, rests, and accidentals. A bracket labeled "9 : 8" spans across the first two staves. The bottom of the page shows several empty staves.

26



fa dim. sub. p

mf NO - VA GE - NI TU -

pp RA

Cant.

Handwritten musical score for voice and piano. The voice part includes lyrics: NO - VA GE - NI TU - RA NO - VA. The piano part includes dynamic markings: pp, dim., and a boxed note 'dim. D'. A handwritten note 'senza misura, non sincrona' is present.

Rep. dim. B. a niente

Handwritten musical score for piano accompaniment. It features complex rhythmic patterns in the right and left hands, with dynamic markings: p, pp, and dim.

semplice

crot. ppp

NO - VA GE - NI - TU - RA.

Handwritten musical notation for a piano part, including a 'ppp' dynamic marking.

Handwritten musical notation for a piano part, including a 'ppp' dynamic marking and lyrics: NO - VA O - A.

Rep. dim. 'E' a niente

Rep. dim. 'd' a niente

Handwritten musical notation for piano accompaniment, featuring repeated melodic phrases with dynamic markings: Rep. dim. 'E' a niente and Rep. dim. 'd' a niente.

SOLI DEO GLORIA